

# 2011

## WISCONSIN Winnebago System Sturgeon Spearing Regulations & Information



Ron Grishaber of Appleton with the new Winnebago and WI state record lake sturgeon he speared opening day of the 2010 sturgeon season.

212.2 pounds, 84.2 inches total length,  
42.8 inch girth

***Sturgeon Hotline  
920-303-5444***

***For information on the sturgeon  
spearing season, or the  
Sturgeon Guard Program.***

***To get on the Winnebago Sturgeon E-  
mail List to receive daily spearing  
reports please e-mail  
[ronald.bruch@wisconsin.gov](mailto:ronald.bruch@wisconsin.gov)***

## ***Dear Winnebago Sturgeon Spearer,***

The 2011 sturgeon spearing season on Lake Winnebago and the Upriver Lakes begins on Saturday February 12. Spearing enthusiasm is at a high point after the exceptional harvest of 1820 fish in 2010 including the 212.2 lb record fish speared by Ron Grishaber of Appleton, and 82 other fish 100 pounds or larger. License sales for 2011 set a new record at 12423 (including the 490 sold for the Upriver Lakes fishery), up 46% since 8533 were sold for the 2007 season.

Despite the nice harvests we've seen recently, our adult stock of lake sturgeon has actually increased over the last decade. In 2010 we estimated we had 15800 females and 31700 males in our adult spawning stock. Given these robust numbers, we have been able to raise the harvest caps again for the 2011 season which should translate into more spearing opportunities. As all spearkers know though, water clarity is the great moderator of spearing success, along with spending as much time looking down your hole as possible, and being in an area with feeding sturgeon.

There are a number of theories about what affects the distribution and movement of sturgeon in the Winnebago lakes during the spearing season. Food concentration (lakefly larvae or redworms, and gizzard shad) is probably the most widely held theory, followed by barometric pressure changes, and the final movement of adults prior to their spring spawning run up the Fox and Wolf Rivers. Just a few notes on these factors in 2011 – food is incredibly abundant this year; good concentrations of redworms in the Lake Winnebago mud flats, and the gizzard shad hatch is the largest we've seen since the early 1990s – so there should be shad on the bottom all over the lakes. We also know that more than 90% of the adult sturgeon that will spawn in 2011 have already left Lake Winnebago with about half of these fish already up in the rivers and the other half moving through the Upriver Lakes.

So – we never know exactly how a season will pan out until we get into it, but one thing we can count on is – by the end of the season there will many new stories of fish seen, fish speared, and the big ones that got away.

Looking forward to the 2011 season,

***Ron Bruch***

Winnebago Sturgeon Biologist



# Winnebago System Sturgeon Spearing Regulations and Information

## CONTENTS

2011 Sturgeon Spearing Regulations .....	page 3
Sturgeon Registration Stations .....	page 5
Tracking Winnebago System Lake Sturgeon.....	page 7
Winnebago Lake Sturgeon Length at Age.....	page 8
Summary of the 2010 Sturgeon Spearing Season...	page 9
Winnebago Citizens Sturgeon Advisory Committee..	page 12
Sturgeon Guarding Volunteers Needed.....	page 12
Sturgeon for Tomorrow.....	page 13



Ryan Zernzach (l) and Kendall Kamke (r) work amongst the creature comforts of Kendall’s registration shack at Stockbridge

# WINNEBAGO SYSTEM STURGEON SPEARING REGULATIONS

Please take a few minutes to carefully read through this regulation pamphlet.

To report violations call: **1-800-TIP-WDNR (1-800-847-9367)**  
or cell #367

## 2011 OPEN SEASON – Winnebago System Sturgeon Spearing

### Lake Winnebago

February 12, 2011 through February 27, 2011 on Lake Winnebago **or until the pre-set harvest cap for Lake Winnebago is reached, OR the pre-set Winnebago System-wide harvest cap is reached, whichever comes first** (as per trigger closure rules).

### Upriver Lakes

February 12, 2011 through February 27, 2011 on the Upriver Lakes (Lakes Butte des Morts, Winneconne and Poygan) **or until the pre-set harvest cap for the Upriver Lakes is reached, OR the pre-set Winnebago System-wide harvest cap is reached, whichever comes first** (as per trigger closure rules).

*An annual lottery sturgeon spear fishery began on the Upriver Lakes in 2007. Spearers need to apply for an Upriver Lakes sturgeon lottery tag by August 1 and are notified by October 1 if they were successful in receiving authorization to purchase an Upriver Lakes sturgeon spearing license. Group lottery applications of up to four persons are accepted. Group applications must be submitted on-line at [https://jc.activeoutdoorsolutions.com/wi\\_public/goHome.do](https://jc.activeoutdoorsolutions.com/wi_public/goHome.do) Spearers that applied for but not authorized to purchase an Upriver Lakes license receive a preference point, and can still purchase a license for Lake Winnebago, but must do so by the October 31 license sales deadline (spearers can only buy one tag or the other, not both). Sales for both Lake Winnebago and Upriver Lakes sturgeon spearing licenses end October 31. The Upriver Lakes sturgeon lottery fishery limits participation to 500 tags in 2011 (numbers of tags in future seasons may vary) and will have a small sub-allocation of the overall sturgeon harvest cap (see below).*

**Total harvest of sturgeon will be limited through pre-set harvest caps. Harvest**

*caps for the 2011 Winnebago System spearing season are 395 for juvenile females, 790 for adult females and 1200 for males. Portions of the system-wide harvest caps have been allocated to the fisheries on Lake Winnebago and the Upriver Lakes:*

	<i>Juvenile Females</i>	<i>Adult Females</i>	<i>Males</i>
<i>Lake Winnebago</i>	<i>316</i>	<i>711</i>	<i>960</i>
<i><u>Upriver Lakes</u></i>	<i><u>79</u></i>	<i><u>79</u></i>	<i><u>240</u></i>
<i>Winnebago System</i>	<i>395</i>	<i>790</i>	<i>1200</i>

*The Department will close the sturgeon spearing season on Lake Winnebago when the first of one of the two following conditions occurs:*

- At the end of the fishing day in which 100% of any one of the three Lake Winnebago harvest caps is reached or exceeded, or*
- 24 hours from the end of the fishing day within which a harvest of 90% to 99% of any one of the three Lake Winnebago harvest caps is reached.*

*The Department will close the sturgeon spearing season on the Upriver Lakes when the first of one of the two following conditions occurs:*

- At the end of the fishing day in which 100% of any one of the three Upriver Lakes harvest caps is reached or exceeded, or*
- 24 hours from the end of the fishing day within which a harvest of 90% to 99% of any one of the three Upriver Lakes harvest caps is reached.*

*The Department will close the sturgeon spearing season on all waters of the Winnebago System when the first of one of the two following conditions occurs:*

- At the end of the fishing day in which 100% of any one of the three Winnebago System-wide harvest caps is reached or exceeded, or*
- 24 hours from the end of the fishing day within which a harvest of 90% to 99% of any one of the three Winnebago System-wide harvest caps is reached.*

**BAG LIMIT:** One lake sturgeon per licensee

**MINIMUM LENGTH LIMIT:** 36 inches

**LICENSE REQUIREMENT:** To spear sturgeon, residents must purchase a

sturgeon spearing license and tag for \$20.00 and nonresidents must purchase a sturgeon spearing license and tag for \$65.00

Only persons 14 years of age and older are eligible to spear sturgeon. No sturgeon spearing license may be issued or purchased after October 31, 2010 except for Wisconsin residents that turn 14 between November 1, 2010 and the last day of the 2011 spearing season, and for Wisconsin residents serving in the Armed Forces home on leave during the 2011 spearing season.

The sturgeon spearing license and tag must be carried by the licensee at all times while fishing for sturgeon with a spear.

A sturgeon spearing license and tag is nontransferable. No person may use or carry the tag or license of another.

No person may possess a validated sturgeon carcass tag unless attached to a legal sturgeon.

**SPEARING HOURS:** 6:30 AM to 12:30 PM.

#### **LIGHTS, UNDERWATER CAMERAS, DEPTH LOCATORS**

No artificial lights of any kind can be utilized while spearing. Underwater cameras may be used, but any lights on the camera must be disabled (turned off, taped over, or non-illuminating). Depth Locators can be used.

#### **POSSESSION AND USE OF A SPEAR**

No person may have under his or her control any spear or similar device in any enclosure on the ice or waters of the Winnebago System except when authorized during established sturgeon spearing seasons.

No person may take, capture, kill or attempt to kill sturgeon on the Winnebago System by any means other than spearing with a spear thrown by hand from inside a fishing shelter placed on the ice during the open spearing season.

#### **ICE HOLE RESTRICTIONS**

No person may cut, use, or maintain an ice hole larger than 12 inches in diameter or square for the taking of fish in any manner through the ice except spearing sturgeon on the Winnebago System during the open season. The total area of a sturgeon spearing hole or combination of holes in an individual spearing shelter may not exceed a total of 48 square feet. Ice holes larger than 12 inches cut, used, or maintained may not be covered by a shelter, shanty, or similar device,



except during the period from 48 hours before and continuing through the open season for sturgeon spearing season.

### **ICE HOLE MARKING**

Sturgeon spearing ice holes must be marked with at least 2 strips of wood that extend at least 3 feet above the ice. The wood strips must not exceed 1.5 inches in width and .25 inches in thickness (wood lathe meets the requirement). When you first set your shanty, cut a hole and freeze the lathe into the ice for better marking of sturgeon holes. Lathe markers stuck in snow banks are not adequate because of snow melt during warm weather conditions.

### **SPEARING OF ROUGH FISH**

Spearing of any species of fish other than sturgeon from the Winnebago System is prohibited during the sturgeon spearing season.

### **TAGGING REQUIREMENT**

A spearer with an unused and valid sturgeon license and tag who spears a lake sturgeon must **immediately** validate and attach their carcass tag to the sturgeon (just forward of the tail). Any sturgeon speared must be registered the same day it was speared by 1:30 PM.

It is illegal for any person to possess any sturgeon or part thereof without the carcass tag validated and attached.

**GROUP BAGGING is not legal and occurs whenever the person who tags the sturgeon is different from the person who speared the sturgeon.**

### **TRANSPORTATION**

It is unlawful for any person to transport any unregistered sturgeon in or on any motor driven vehicle unless the sturgeon is carried openly exposed and placed so the carcass tag cannot be handled by anyone. *"Openly exposed" means open to view by a person in a passing vehicle.*

To transport a legally harvested and tagged sturgeon the fish must be accompanied by the spearer until registered

**It is illegal to possess an unregistered sturgeon speared from Lake Winnebago outside the highway boundary area delineated as follows:** *From the intersection of highways 10 and 114 in Menasha, east on highway 114 to highway 55; south on highway 55 to U.S. highway 151; south on U.S. highway 151 to Winnebago drive; Winnebago drive to west Scott street in*

*Fond du Lac; west on Scott street to highway 45; north on highway 45 to Main street in Oshkosh; north on Main street to Waugoo avenue; east on Waugoo avenue to Bowen street; north on Bowen street to North Shore drive; north on North Shore drive to county highway A; north on county highway A to highway 114 in Neenah; east on highway 114 to the intersection of highways 10 and 114 in Menasha.*

**It is illegal to possess an unregistered sturgeon speared from Lakes Butte des Mort, Winneconne or Poygan outside the highway boundary area delineated as follows:** *From the intersection of highways 41 and 21 in Oshkosh west on highway 21 to highway 116; north on highway 116 to county highway B; west on county highway B to county highway D; west on county highway D to highway 49; north on highway 49 to county highway H; east on county highway H to highway 110; east on highway 110 to county highway II; south on county highway II to county highway M; south on county highway M to highway 116; east on highway 116 to highway 45; south on highway 45 to highway 41; south on highway 41 to highway 21.*

### **REGISTRATION**

A person who spears a sturgeon must accompany and exhibit the tagged sturgeon at an official sturgeon registration station (see map page 6) no later than 1:30 p.m. on the day speared. ***To avoid the "end of the day" rush please bring your fish in as soon as possible after spearing it. You must be at the registration station and in-line to register your fish by 1:30 PM.***

Any fish harvested from Lake Winnebago must be registered at one of the sturgeon registration stations on Lake Winnebago. Any fish harvested from Lakes Butte des Mort, Winneconne or Poygan (the Upriver Lakes) must be registered at one of the sturgeon registration stations on the Upriver Lakes.

Department Fisheries staff at the registration stations will collect biological information on the size, sex and age of your fish, and will attach a metal sturgeon registration tag.

Both the sturgeon carcass tag and registration tag must be retained until the carcass is consumed.

### **STURGEON REGISTRATION STATIONS**

Operated daily throughout the season by DNR Fisheries staff *(Some stations may be closed before the end of the season depending upon spearing activity and volume of sturgeon registrations. Any necessary early closures will be posted at*

registration stations)

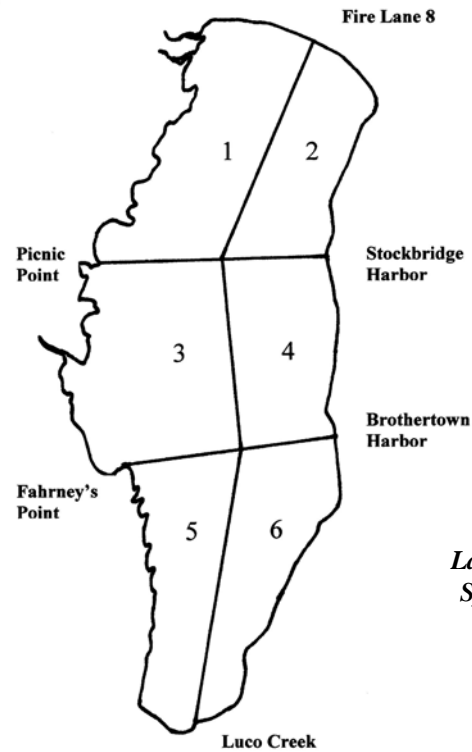
**Winnebago System Sturgeon Registration Stations:**

**Station No.    Station Location**

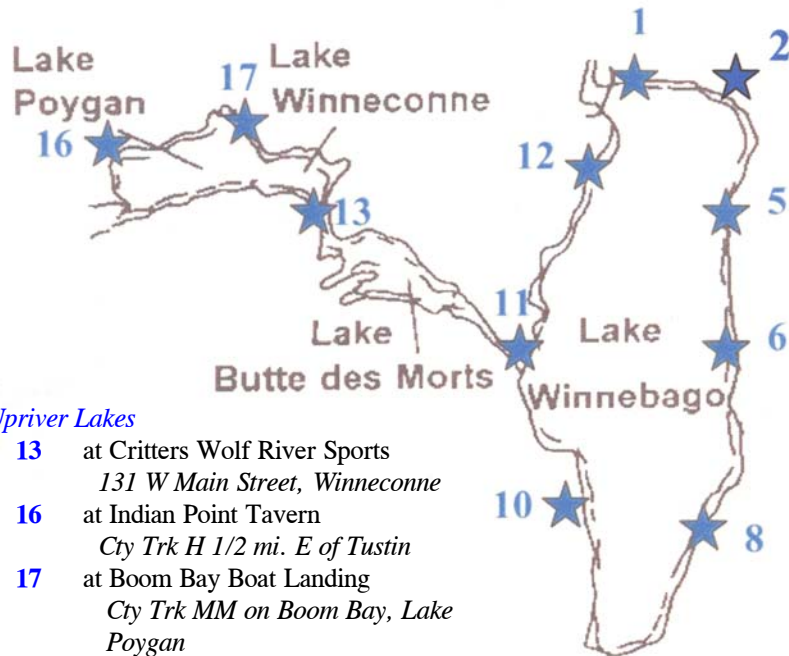
*Lake Winnebago*

- 1**    at Waverly Beach Resort  
*Junction of U.S. Hwys 10 & 114*
- 2**    behind Harrison Town Hall  
*Junction of U.S. Hwys 114 and State Park Rd*
- 5**    at Harbor Bar  
*Stockbridge on the lake*
- 6**    at the Quinney Quencher  
*Quinney on the lake*
- 8**    at the DNR Calumet Harbor Station  
*Pipe on the lake*
- 10**    at Wendt's Bar & Harbor  
*Hwy 45, 8 mi. N of Fond du Lac*
- 11**    at Jerry's Tavern  
*1210 Ceape St., Oshkosh*
- 12**    at Payne's Point Tavern  
*Cty Trk A 3 mi. S of Neenah*

*Note - Some station numbers are missing, (i.e.: 3, 4, etc) due to changes in the number and location of stations over the years.*



*Lake Winnebago Spearing Areas*



*Upriver Lakes*

- 13**    at Critters Wolf River Sports  
*131 W Main Street, Winneconne*
- 16**    at Indian Point Tavern  
*Cty Trk H 1/2 mi. E of Tustin*
- 17**    at Boom Bay Boat Landing  
*Cty Trk MM on Boom Bay, Lake Poygan*

**LITTER**

It is illegal to place or deposit any materials (including biodegradable fish or fish parts) on the lake bed that can not be retrieved. Any material used in a sturgeon spearing hole must be removed by the sturgeon spearer when the hole is abandoned, or if requested by a warden.

Any material that is left on or frozen in the ice or waters is the responsibility of the person who left the material (including tar paper, wood, cardboard or any other litter used adjacent to shanties).

**FISHING EQUIPMENT OR GEAR**

It is unlawful to possess a fishing pole, hook and line, angling equipment or other similar devices that could be used to catch fish in an ice fishing tent,

shanty, or other ice fishing enclosure with ice holes larger than 12 inches in diameter or square.

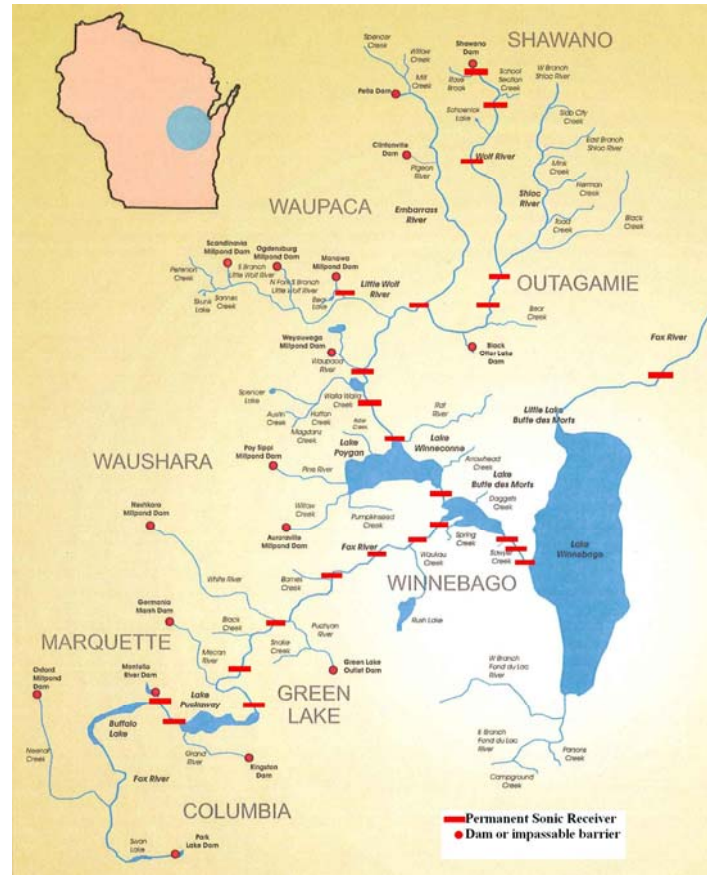
### ICE SHANTIES AND SHELTERS

The door of any occupied shanty/shelter shall be such that the door can be readily opened from the outside.

All shanties/shelters must have the name and residential address of the person owning or using the shanty. The name and address must be painted or permanently affixed on the outside with a minimum of 1" lettering.

All shanties/shelters must be removed from the ice (for all inland waters south of Hwy 64) by the first Sunday following March 1 (March 6, 2011).

### Tracking Winnebago System Lake Sturgeon



Since 2004 we have been tracking the movement of adult and juvenile lake sturgeon in the Winnebago-Fox-Wolf System using sonic and radio telemetry. With the help of numerous clubs from around the System including Fishermen's Rd Fishing Club, Sturgeon for Tomorrow, Shadows on the Wolf, and West Shore Fishing Club, we originally purchased 24 electronic sonic receivers and deployed them from Shawano to Winneconne on the Wolf River and from Montello to Appleton on the Fox River. These receivers listen 24/7 for sturgeon swimming by with one of our sonic tags implanted in its abdominal cavity. The amount of time each tag sends a signal depends on the size of the tag and the battery encased in it, ranging from 6 months for fingerling size sturgeon to 10 years for sub-adults and adults. Since 2004 we have surgically implanted 362 lake sturgeon with sonic tags (photo right), and the data from these tags have provided incredible insight into the seasonal habitat use and



migrational patterns of sturgeon ranging from 1/4 pound to 200+ pounds in weight.



We download each Vemco® sonic receiver (shown left) twice a year onto our field computer (purchased by SFT) to collect hundreds of thousands of data. Doug Rinzel, one of our Senior Fisheries Technicians in Oshkosh, tabulates all these data and puts together a summary for each fish detected. Collectively these summaries give us peak into the world of lake sturgeon behavior on our system that would be impossible to attain using traditional tagging methods.

Although we still have tags out there that

will be transmitting data until 2018, we have learned a lot in the last 6 years:

- Most spawning adults migrate out of Lake Winnebago in the fall with some spending the winter in the rivers and some spending the winter in the Upriver Lakes;
- By the third week in March, all of the spawning adults are on the move towards their final staging area where they will wait until water temperatures are optimum (52-56 degrees F) in mid to late April for spawning to commence;
- Ovulating females release all of their eggs over about a 8-12 hour period and return quickly back to their home territory;
- Males will spawn at multiple sites and in multiple rivers (some in the upper Fox and the Wolf in the same year), and will hang around in the river for over a month waiting for all of the females to ovulate before quickly returning to their home territory;
- About 83% of adults call Lake Winnebago their home in between spawning runs; 15% the Upriver Lakes; and 2% the rivers (these river fish never come down to the lakes).
- Some males, especially larger and older males in good condition, spawn every year. About 75% of the adult males make the annual spawning run. Males spawn for the first time when they are 14-31 years old (47"-55") with more of the smaller males spawning every other year.
- Although the data we will collect through 2018 will tell us the whole story on female spawning patterns, it appears that about 25% of the adult females make the spawning run each year. Remember – it takes an adult female lake sturgeon 3-5 years to develop each set of eggs she lays; and she does not spawn for the first time until she is 20-34 years old (48"-60").
- Fingerling sturgeon (those hatched in spring) spend the first summer in the upper rivers, but then move quickly downstream to deeper areas of the lower rivers, or to the Upriver Lakes in fall when water temperatures drop into the 50s.
- Juvenile sturgeon (yearlings and older) appear to spread themselves out throughout the rivers and lakes, although have a tendency to reside in the Upriver Lakes and the lower Wolf River. *(This is an area of research we are also still concentrating on using both sonic and radio tags.)*
- Some young male and female lake sturgeon in puberty, but not fully matured, will make a false spawning run with the adults in the spring traveling from the lakes all the way to Shawano in some cases. These fish do not come on to the spawning grounds, but remain in the river adjacent to the grounds - perhaps learning the “facts of life” from their elders.

- **We also are using the sonic receiver system to track flathead catfish and walleye habitat use and migrational patterns.....stay tuned!** With help of clubs again we plan to purchase and surgically implant 3 year sonic tags into 100 spawning walleyes with in the spring of 2011 on the Wolf, upper Fox, and Lake Winnebago.

### Lake Sturgeon Length at Age – Winnebago System

Total Length (in)	Male Estimated Age (yrs)	Female Estimated Age (yrs)
36	9	9
38	10	10
40	12	12
42	14	13
44	15	15
46	17	17
48	20	19
50	22	21
52	24	23
54	27	26
56	30	29
58	33	31
60	36	34
62	40	37
64	43	41
66	47	44
68	51	48
70	55	51
72	60	55
74		60
76		64
78		69
80		73
82		78
84		83



## 2010 Sturgeon Spearfishing Season Summary

The 2010 sturgeon spearfishing season on the Winnebago Pool Lakes ran 6 days on both Lake Winnebago and the Upriver Lakes, with a total harvest of 1820 fish. The “big fish” story was the new Winnebago and state record sturgeon speared by Ron Grishaber of Appleton. Ron harvested the 212.2 pound, 84.2 inch fish on opening day,



*New state and Winnebago System record lake sturgeon taken by spear, by Ron Grishaber of Appleton on February 13, 2010, Lake Winnebago. F1 stage female, 212.2 pounds, 84.2 inches total length, 42.8 inch girth.*

Saturday February 13 on the north end of Lake Winnebago. The fish was an F1 female (no developed eggs) that shattered the former record of 188 pounds set by Dave Piechowksi of Redgranite, WI in 2004 (which was 79.5" long). If Ron’s fish would have been carrying fully developed eggs, she would have weighed between 240 and 250 pounds! The longest sturgeon on record in the spear harvest was a 90" fish harvested in 1951 (which was only 118 pounds - likely a female that had spawned the previous spring – 30% to nearly 40% of the body

Lake Area (2010 Season)	Juvenile Female Harvest	Adult Female Harvest	Male Harvest	Total Harvest
Lake Winnebago	223	725	560	1508
Upriver Lakes	46	76	190	312
<b>Total</b>	<b>269</b>	<b>801</b>	<b>750</b>	<b>1820</b>
<i>System-Wide Harvest Cap</i>	350	740	1000	

weight of these large females, when in the black egg stage, will be eggs). The all-time record male in the Winnebago spear harvest was also registered during the 2010 season on opening day, a 116.8 pound, 71.3 inch fish taken in Lake Winnebago off Pipe by Matthew Judkins of Mt. Calvary.

Out of the total harvest of 1820 fish from Lake Winnebago and the Upriver Lakes combined, 83 were 100 pounds or larger (76 from Winnebago, 7 from the Upriver Lakes). The number of large fish has been increasing in the harvest, as well as in spawning stock surveys the past decade due, at least in part, to a series of harvest restrictions recommended during the 1990s by the Department and the Winnebago Citizens Sturgeon Advisory Committee designed to increase the survival of adult female sturgeon. In years past, typically all of the big fish were adult females, but this year 4 males larger than 100 pounds were registered.

Water clarity was outstanding until a few days before the season began when run-off from pre-season rains began to cloud the water in the Upriver Lakes and along the west shore of Lake Winnebago south of Oshkosh. Spearers were able to enjoy fairly to very clear water in most other areas of Lake Winnebago though for the full season. Ice conditions were good, 17 to 20 inches thick in most areas, with only moderate snow cover – just enough not to impair travel severely, but more than enough to give spearers banking snow for their shacks.

Spearers on Lake Winnebago had their best success off the north and east shores, as they did in the 2009 season, registering 1508 fish prior to the adult female closure trigger being hit. On the Upriver Lakes spearers registered 312 fish before the closure trigger for adult female sturgeon was hit (Table left). Opening day shanty counts were 4033 on Lake Winnebago and 490 on the Upriver Lakes. Total license sales in 2010 were 10860 (Table pg 10), up 6% from the 2008 season, and 27% since the 2007 season.

The 2010 season included the 4th annual lottery fishery on the Upriver Lakes. The number of applicants entering the lottery for an Upriver Lakes license in 2010 was 4228, up 5% from 4031 applicants in 2009.

In August 2009, five hundred applicants were drawn at random and authorized to purchase an Upriver Lakes license. Those applicants not drawn for a tag received a preference point and a higher ranking for next year's drawing (*providing they enter the lottery again next year; preference points are retained for 3 years if a person does not enter the lottery in subsequent years*).

Lake Area (2010 Season)	Regular License Sales	14 year old (after Oct 31)	Armed Forces	Non Resident	Total Sales
Winnebago	10194	2	0	170	10366
Upriver Lakes	485	0	0	9	494
<b>Total</b>	<b>10679</b>	<b>2</b>	<b>0</b>	<b>179</b>	<b>10860</b>

While the pre-set harvest cap for adult females of 740 fish was exceeded with the final harvest of 801 adult females, tag returns estimate our exploitation rate was 4.4%, still below the 5% annual limit.

Fish in the harvest this year were in excellent condition due to a good hatch of gizzard shad in 2009, and a robust population of lakefly larvae ("redworms") in Lake Winnebago. Sturgeon in the Winnebago System get approximately 1/2 of their nutrition from lakefly larvae and about 1/3 from shad.

Following the spearing season, we received a few questions from spearers concerned that we may be harvesting too many large sturgeon, given the surge in the number of 100+ pound fish in recent harvests. After looking closely at the population and harvest data, at this point the trend of increasing numbers of big fish is definitely real and something that has been building over the last 15 years. We expect this trend to continue, and expect to see more fish in excess of 200 pounds in the harvest over time.

A concern forwarded to us by some spearers after the season was the use of cameras as an aid to spear sturgeon - primarily the use of cameras to see fish that could not be seen down the hole, and then

blindly throwing at these fish hoping to get lucky. Our Winnebago Citizens Sturgeon Advisory Committee discussed this issue at their meeting in September 2010 and felt that, at this time, the use of cameras does not appear to be having a negative impact on the fishery nor resulting in an increase in wounded fish.

#### Other 2010 sturgeon spearing season statistics:

Harvest by sex and station, 2010	Juvenile Female	Adult Female	Male	Totals
Waverly	21	102	77	200
Harrison	22	109	57	188
Stockbridge	76	181	148	405
Quinney	30	102	89	221
Cal Har / Jim & Linda's	17	56	45	118
Wendts	14	41	43	98
Jerry's	13	41	25	79
Payne's Point	30	93	76	199
Winneconne	19	27	70	116
Indian Point	10	19	41	70
Boom Bay	17	30	79	126
<b>Totals</b>	<b>269</b>	<b>801</b>	<b>750</b>	<b>1820</b>

Shanty Counts Opening Day	2007	2008	2009	2010
Area 1	537	424	670	849
Area 2	735	427	603	1134
Area 3	325	397	639	285
Area 4	643	607	1504	938
Area 5	642	897	1672	345
Area 6	599	419	870	458
Butte des Morts	26	31	24	42
Winneconne	46	58	23	57
Poygan	465	423	490	370
<b>Total</b>	<b>4018</b>	<b>3683</b>	<b>6495</b>	<b>4478</b>

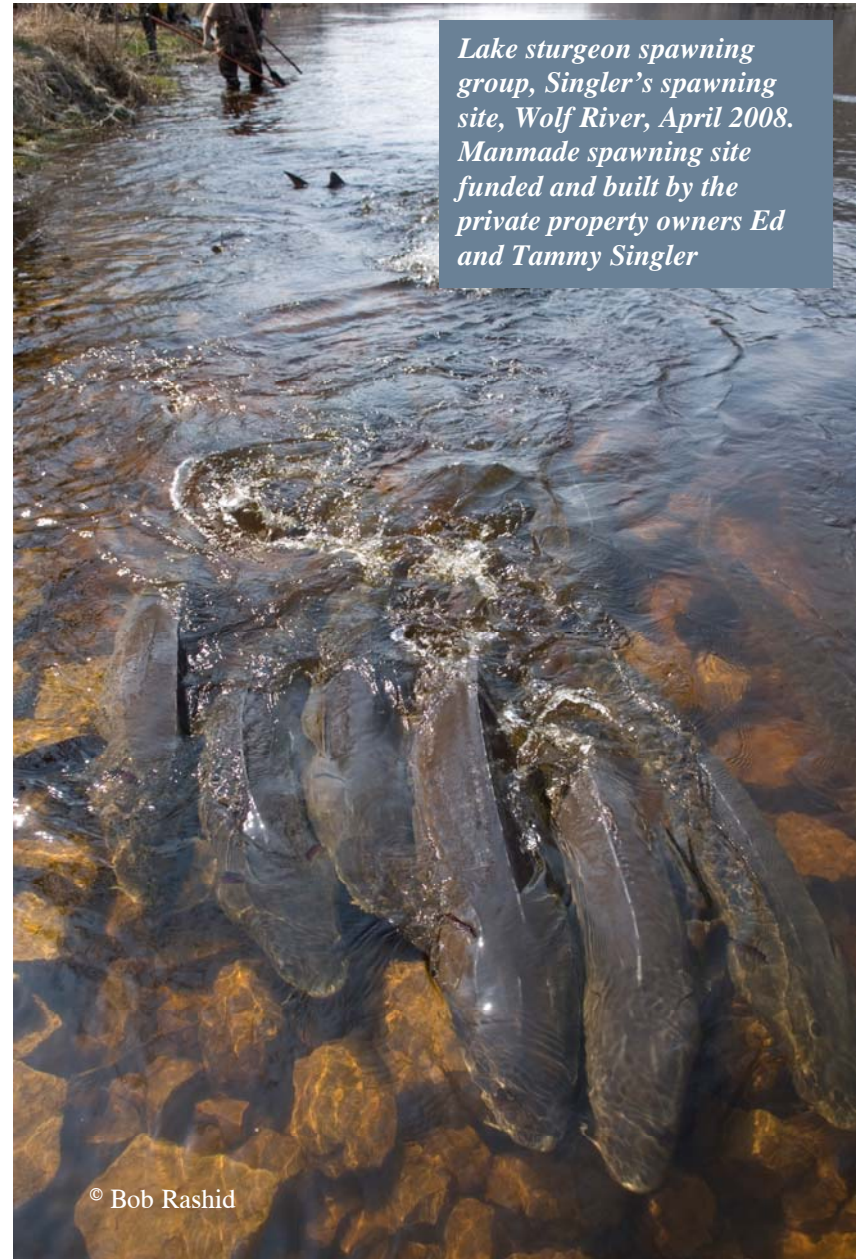
**2010 Harvested Sturgeon Average Lengths & Weights,  
and % of Harvest, Lake Winnebago**

	Juv Fem	Ad Fem	Male	All
Length (in)	49.6	63.4	54.4	58.0
Weight (lbs)	29.3	71.2	42.5	54.3
Number	223	725	560	1508
% of Harvest	15%	48%	37%	

**2010 Harvested Sturgeon Average Lengths & Weights,  
and % of Harvest, Upriver Lakes**

	Juv Fem	Ad Fem	Male	All
Length (in)	47.1	62.7	52.4	54.2
Weight (lbs)	23.4	67.6	36.8	42.3
Number	67	53	155	312
% of Harvest	15%	24%	61%	

Winnebago System Sturgeon Harvest – Residency of Successful Spearers, 2010.		
County	No. Registered	% of all Registered
Winnebago	485	26.6%
Calumet	327	18.0%
Fond du Lac	276	15.2%
Outagamie	276	15.2%
Waupaca	81	4.5%
Manitowoc	38	2.1%
Waushara	36	2.0%
Brown	35	1.9%
Green Lake	32	1.8%
Sheboygan	25	1.4%
Shawano	20	1.1%
Dodge	17	0.9%
<b>Other WI Co.'s (36)</b>	<b>143</b>	<b>7.9%</b>
<b>Out of State (6)</b>	<b>29</b>	<b>1.6%</b>



*Lake sturgeon spawning group, Singler's spawning site, Wolf River, April 2008. Manmade spawning site funded and built by the private property owners Ed and Tammy Singler*

© Bob Rashid



## Winnebago Citizens Sturgeon Advisory Committee Members, 2011:

Mike Arrowood, WinnebagoLand Conservation Alliance.  
Randy Bauman, Lower Cliff Fishing Club  
Jeff Birschbach, Riverside Hunting & Fishing Club  
Dick Braasch, West-Central Chapter, Sturgeon for Tomorrow  
Pat Braasch, West-Central Chapter, Sturgeon for Tomorrow  
Bill Casper, Main Chapter, Sturgeon for Tomorrow  
Bob Doepker, Lake Park Fishing Club  
Bruce Fischer, Brickyard Fishing Club  
Chuck Freund, Brothertown Fishing Club  
Jim Gehrke, Payne's Point Hook & Spear Fishing Club  
Ron Goldapske, West Shore Fishing Club  
Pat Gorshals, Poygan Sportsman's Club  
Dan Groeschel, Main Chapter, Sturgeon for Tomorrow  
Wayne Hoelzel, Northern-Half Chapter, Sturgeon for Tomorrow  
Harry Kachur, Montgomery Beach Sportsman's Club  
Dick Koerner, Twin City Rod & Gun Club, WI Conservation Congress  
Bill Jenkins, Pipe Fishing Club  
John Jenkins, Pipe Fishing Club  
Bill Marcks, Shadows on the Wolf  
Bill McAloon, Otter St. Fishing Club  
Dick Mengel, Fishermen's Road Fishing Club  
Don Mielke, Lower Cliff Fishing Club  
Stuart Mucche, West Shore Fishing Club  
Gary Olson, Berlin Conservation Club  
Jerry Ortlieb, Stockbridge Fishing Club  
Bob Parsons, Stockbridge Fishing Club  
Jim Propson, Brickyard Fishing Club  
Dan Rudebeck, Poygan Sportman's Club  
Rich Scheffler, Quinney Fishing Club  
Andy Seibel, East Shore Conservation Club  
Dave Vogds, Main Chapter, Sturgeon for Tomorrow  
Mike Will, Upper Lakes Chapter, Sturgeon for Tomorrow  
Matt Woods, Upper Lakes Chapter, Sturgeon for Tomorrow

*The Winnebago Citizens Sturgeon Advisory Committee was formed in 1992 and since has worked closely with Ron Bruch and the DNR to review Winnebago sturgeon harvest and population data and recommend new rules and management activities when needed. **Dedicated to Alvin (Butch) Schneider, Quinney Fishing Club, and Sherman Jacobson, WinnebagoLand Conservation Alliance; SAC members that passed away recently.***

## Sturgeon Guard Volunteers Needed In Spring

Each Spring hundreds of volunteers have an opportunity to guard sturgeon at their spawning sites on the Wolf River and protect the fish from poaching. When the sturgeon are spawning along the rocky shorelines of the Wolf they are very susceptible to illegal harvest. The volunteers of the "Sturgeon Patrol" guard the spawning fish 24 hours a day throughout the spawning season. The program is directed by DNR Law Enforcement staff and funded, in part, by Sturgeon for Tomorrow, a local sturgeon conservation organization.



When spawning begins, pairs of sturgeon guards are assigned to the sites for twelve hour shifts. Prior to assignment, guards check in at "Sturgeon Camp", just north of Shiocton, where they are fed a good meal, given a generous sack lunch, a cell phone, an identification hat (that they keep), and a map that directs them to their site. At the end of their shift, guards return to camp for another hearty home cooked meal before they make their way home.

Guards are scheduled from April 15th through May 5th. Spawning generally occurs over a five to seven day period within that time window. We do our best to get all scheduled guards out on the riverbank to see fish, although we must cancel some scheduled shifts if the fish are simply not active. We try in those cases to re-schedule guards into an active period.

If you would like to sign up, contact the DNR sturgeon guard coordinator at the DNR Oshkosh Service Center at [dnrsturgeonguard@wisconsin.gov](mailto:dnrsturgeonguard@wisconsin.gov) or call 920-303-5444. Your call will be returned to schedule a day or night next spring that is convenient for you. If possible, make it a family outing by bringing a son or daughter or your spouse. For many it has become a family tradition.



## Sturgeon for Tomorrow

In 1977 a group of sturgeon enthusiasts from Lake Winnebago founded Sturgeon for Tomorrow to help preserve, protect and enhance the sturgeon resource of the lake system. That group quickly grew into the largest citizen advocacy group for sturgeon in the world, currently made up of five chapters and over 3,000 members. Through tremendous dedication and hard work Sturgeon for Tomorrow (SFT) has

raised and donated to date over \$750,000 for sturgeon research and management since its inception. SFT has funded a wide variety of projects over the years including the sturgeon guard program, the Sturgeon History Project, purchase of sampling equipment, spawning and nursery site construction, sturgeon population assessments, sturgeon propagation and the Upper Fox River sturgeon rehabilitation project. SFT also provided the support necessary to ensure the enactment of the \$1,500 fine for possession of an illegal sturgeon, and actively participates in Winnebago and statewide sturgeon management advisory committees.



### Sherwood Lions Sturgeon Derby



Sturgeon for Tomorrow, and various Lion's Club Charities such as the Wisconsin Lions Camp in Rosholt also benefit from the Sherwood Lions Club Annual Sturgeon Derby. The Rosholt Lions camp is dedicated to providing a quality camping experience free-of-charge to eligible Wisconsin residents who are Blind or visually impaired, Deaf or Hard of Hearing, youth with mild cognitive disabilities and youth with diabetes.

If you are interested in further information about Sturgeon for Tomorrow or are interested in attending one of their five fund raising banquets held each year, please call:

<b>Jim Patt</b>	SFT Southwest Chapter President (Fond du Lac) Banquet January 8, 2011 in Fond du Lac	<b>920-922-7136</b>
<b>David Vogds</b>	SFT Main Chapter President (East Shore) Banquet January 22, 2011 in Kiel	<b>920-921-3701</b>
<b>Wayne Hoelzel</b>	SFT Northern Half Chapter President (North Shore) Banquet February 5, 2011 in Darboy	<b>920-725-1206</b>
<b>Dick Braasch</b>	SFT West Central Chapter President (Oshkosh-West Shore) Banquet March 19, 2011 in Oshkosh	<b>920-231-4708</b>
<b>Matt Woods</b>	SFT Upper Lakes Chapter President Banquet September 10, 2011 in Fremont	<b>920-582-0113</b>

*Call now to get your Sturgeon for Tomorrow banquet tickets!*



© Bob Rashid